

CLEC Information

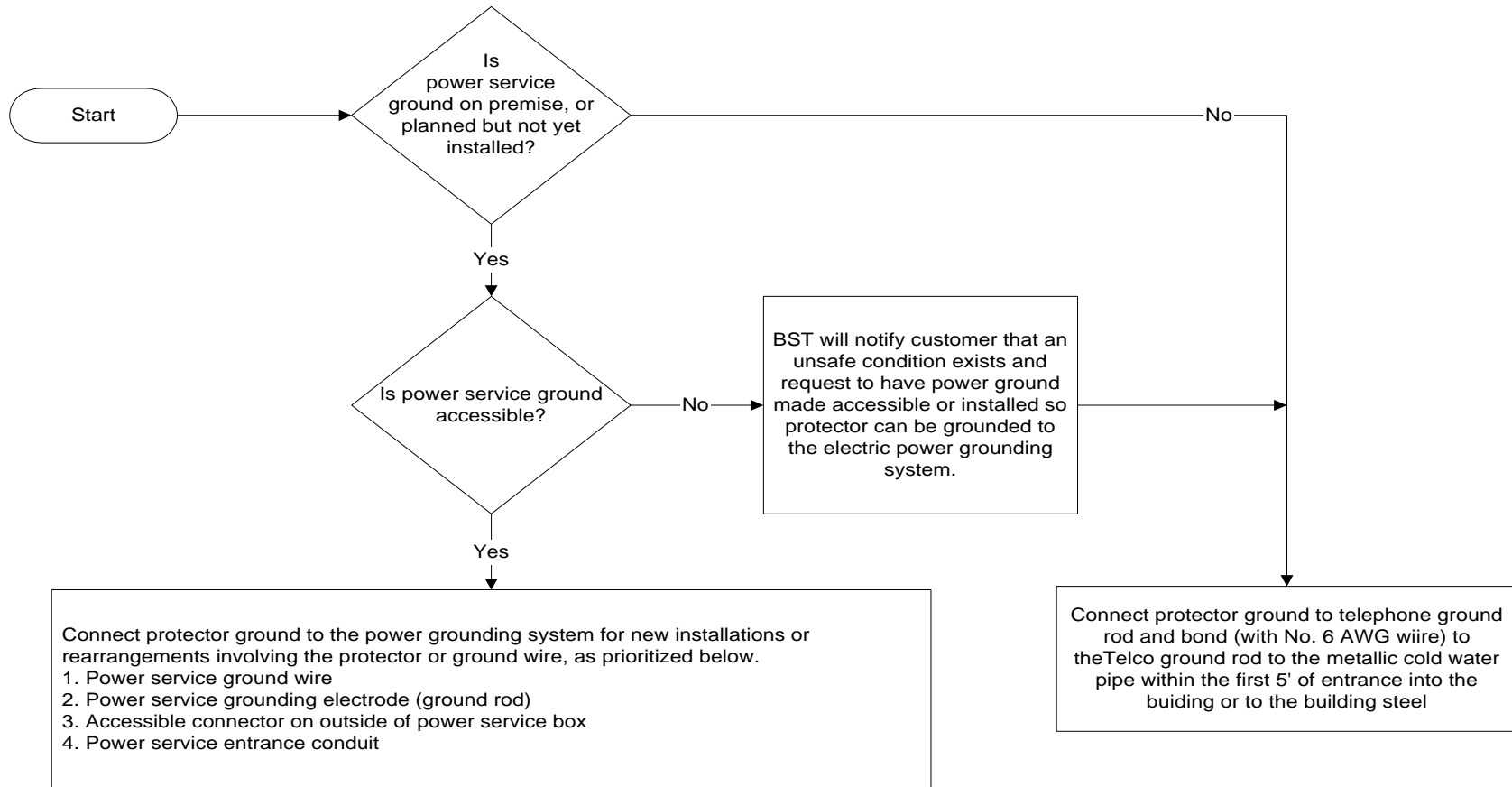
General Bonding & Grounding Guidelines for BellSouth UNE Products

General Guidelines for Support Structures – As indicated on the BellSouth BICS Homepage at http://www.bellsouth.com/bics/bics_guidelines.html.

- 2" to 4" Schedule 40 PVC or metallic conduit(s) from the property line to the building(s).
- A closet or equipment room to locate telecom equipment. Floorspace requirements vary depending on the size and characteristics of the building.
- One or more 120VAC power outlets. Some buildings may require 240VAC.
- 4' X 8' X 3/4" plywood backboard(s)
- Conduit, ceiling space, underfloor duct or other type of enclosed raceway from equipment rooms to tenant spaces.
- 4" riser sleeves between floors of a multi-story building. Firestop material to be installed after cable placement.
- #6 AWG insulated wire from the building's grounding electrode system. Larger diameter wire may be needed in some cases.

General Bonding & Grounding Procedures for BST Technicians can be found on the next page.

General Bonding & Grounding Procedures for BST Technicians



Notes:

1. Water pipes are to be avoided when possible due to the increased use of plastic components in piping systems.
2. Apply NEC and LEC standards concerning the selection and use of water pipes as a conductor or mechanism for bonding to the power ground system.